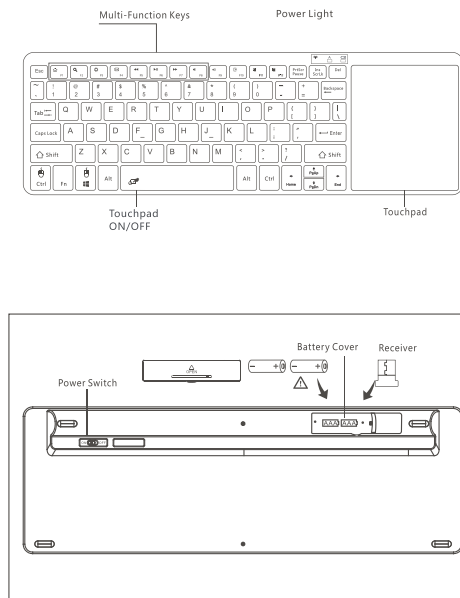


# Ultra Slim Wireless keyboard

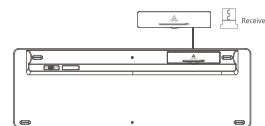
## User'S Manual(1.0)

ZW-51012-1

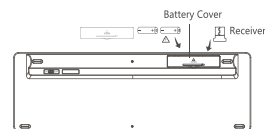


Note:  
1.Do not attempt to disassemble the device. Doing so will void the warranty. Please take the battery out if long time no use the keyboard. The battery will need to be changed if stored for a long period of time without usage.  
2.The manufacturer reserves the right to amend the specifications without prior notification. The illustrations in the user manual are for reference only. Please operate according to the actual object.

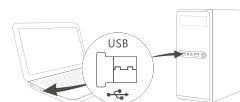
### • Connection Instructions:



1. Please open the battery cover from the back of the keyboard and slide the receiver out from the USB Receiver storage. Then put two AAA batteries into the battery cover.



2. Insert Receiver into a USB port on computer/console.



3. Once receiver is inserted in USB port, slide the power switch on the keyboard to the "ON" position located on the back side of the unit to establish the connection.



4. When the red light blinks and then goes off, the connecting is done, just enjoy it!

### Function Key Combinations(Fn+)

F1	Internet	F2	Search	F3	Set up
F4	Email	F5	Prev	F6	Play/Pause
F7	Next	F8	Volume-	F9	Volume+
F10	Shear	F11	Copy	F12	Paste
PrtScr	Stop	Ins	Page turning lock	Win	Power Light
Q	Working Light	A	Caps Lock		

### Status Display LED

- Power on the keyboard: Red light blink
- Match code success: Red light go off
- Low voltage indication: Red light will blink when the working voltage is under 2.0V.

### Supported Environment

- \* Windows 2000,Windows XP, Windows Vista, Windows CE, Windows 7, Windows 8
- \* Linux(Debian-3.1, Redhat-9.0 Ubuntu-8.10 Fedora-7.0 tested)

### Keyboard Maintenance

1. do not throw the battery into the fire, or a mixture of different types of batteries in order to avoid battery leakage or explosion.Please put the battery in a cool and dry place and away from children;
2. Do not expose the device in extreme heat or cold. Extreme temperatures will cause the life span of the battery to shorten.
3. Use only a damp cloth with mild soap to clean the device. Solvents and other cleaning agents may cause damage to the device.

### Warranty

The product has a 12-month warranty against manufacturing defects starting from the purchase date.

## Warranty Card

User information

Company or personage full name

Contact address

TEL Zip

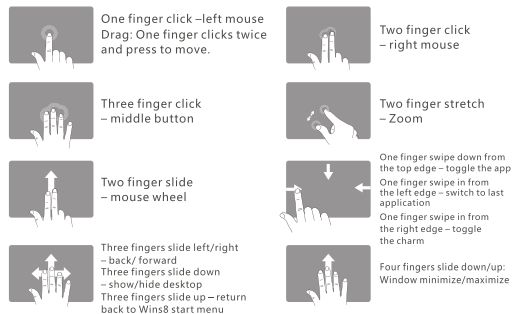
The purchased product name and model NO.

Purchased date

This reason due to the product broken and damage is not include on the warranty.  
(1) Accident, misuse, improper operation, or any unauthorized repair, modified or removed  
(2) Improper operation or maintenance, when operation violation of the instructions or connection unsuitability power supply.



### Touchpad Functions



### Technical Specifications

- Keyboard size : 329.6X110.0X17.8mm
- Touchpad size : 80.4X93.3mm
- Working distance : > 10M
- Weight : 275g
- Keyboard layout : 80Keys
- Sleep time : Six minutes
- Awaken way : Arbitrarily key to awaken
- Working voltage : 2.0-3.0V
- Low voltage alarm : 2.0V
- Standby current : 1.6mA
- Sleep current : 0.03mA
- Use touchpad the working current : 10.75mA
- Use key the working current : 1.8-2.0mA
- Power supply mode : AAA X 2 dry battery