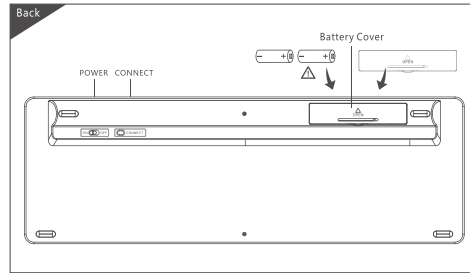
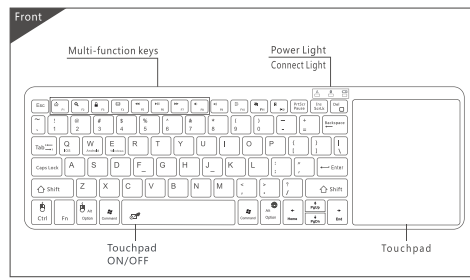


Ultra Slim Bluetooth keyboard

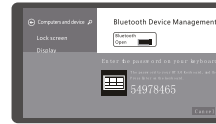
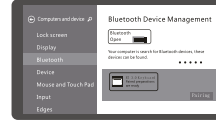
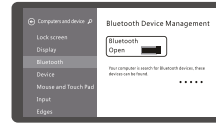
User'S Manual(1.0)

ZW-51012BT-1



Note:
1. Do not attempt to disassemble the device. Doing so will void the warranty. Please take the battery out if long time no use the keyboard. The battery will need to be changed if stored for a long period of time without usage.
2. The manufacturer reserves the right to amend the specifications without prior notification. The illustrations in the user manual are for reference only. Please operate according to the actual object.

Win8 Connection Instructions:



1. Please open the battery cover from the back of the keyboard then put two AAA dry batteries into the battery cover and slide the power switch on the keyboard to the "ON" position located on the back side, the blue light blink.

2. As shown from the picture, press the match code button for 2 seconds, the blue light will blink intermittently, then the keyboard goes into the pairing status.

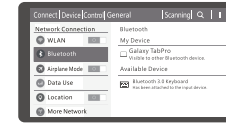
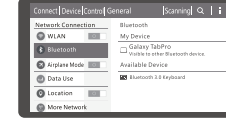
3. Open "Bluetooth" from the settings in start page.

4. Go to the Bluetooth settings of your device and select the keyboard "Bluetooth 3.0 Keyboard" to pair.

5. You may be prompted to enter a passcode. Key in the passcode and press the "Enter" on the Bluetooth keyboard, wait for a while for it to get connected with your device.

6. Once the connecting is done, you can use your keyboard freely.

Android Connection Instructions:



1. Please open the battery cover from the back of the keyboard then put two AAA dry batteries into the battery cover and slide the power switch on the keyboard to the "ON" position located on the back side, the blue light blink.

2. As shown from the picture, press the match code button for 2 seconds, the blue light will blink intermittently, then the keyboard goes into the pairing status.

3. Open "Bluetooth" from the settings in start page.

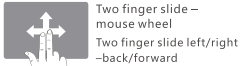
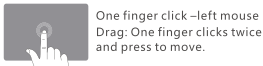
4. Go to the Bluetooth settings of your device and select the keyboard "Bluetooth 3.0 Keyboard" to pair.

5. You may be prompted to enter a passcode. Key in the passcode and press the "Enter" on the Bluetooth keyboard, wait for a while for it to get connected with your device.

6. Once the connecting is done, you can use your keyboard freely.

Remarks : There is no need to enter the passcode again the next time you use it with the same device since the keyboard will search the device and connect with it automatically.

Touchpad Functions



Function Key Combinations(Fn+)

	Internet		Search		Lock screen
	Email		Prev		Play/Pause
	Next		Volume-		Volume+
	Shear		Copy		Paste
	Stop		Page turning		Connect
	Home		Caps Lock		Bluetooth Light
	Power Light		IOS System		Android System
	Windows System				

Technical Specifications

- Keyboard size : 329.6X110.0X17.8mm
- Working voltage : 1.9-3.0 V
- Touchpad size : 80.4X93.3mm
- Low voltage alarm : ≤2.0V
- Working distance : >10M
- Standby current : 0.45mA
- Weight : 270g
- Keyboard layout : 80Keys
- Sleep current : 0.17mA
- Sleep time : Ten minutes
- Power supply mode : AAA x2 dry battery
- Awaken way : Arbitrarily key to awaken
- Use touchpad the working current : 13.3±0.2mA
- Use key the working current : 5mA

Status Display LED

- Power on the keyboard: Red light blink
- Match code success: Red light go off
- Low voltage indication: Red light will blink when the working voltage is under 2.0V.

Supported Environment

- * Windows 2000, Windows XP, Windows Vista, Windows CE, Windows 7, Windows 8
- * Linux (Debian-3.1, Redhat-9.0 Ubuntu-8.10 Fedora-7.0 tested)

Keyboard Maintenance

1. do not throw the battery into the fire, or a mixture of different types of batteries in order to avoid battery leakage or explosion. Please put the battery in a cool and dry place and away from children;
2. Do not expose the device in extreme heat or cold. Extreme temperatures will cause the life span of the battery to shorten.
3. Use only a damp cloth with mild soap to clean the device. Solvents and other cleaning agents may cause damage to the device.

Warranty

The product has a 12-month warranty against manufacturing defects starting from the purchase date.

Warranty Card

User information

Company or personage full name _____

Contact address _____

TEL _____ Zip _____

The purchased product name and model NO. _____

Purchased date _____

This reason due to the product broken and damage is not include on the warranty.

- (1) Accident, misuse, improper operation, or any unauthorized repair, modified or removed
- (2) Improper operation or maintenance, when operation violation of the instructions or connection unsuitability power supply.

