

折线

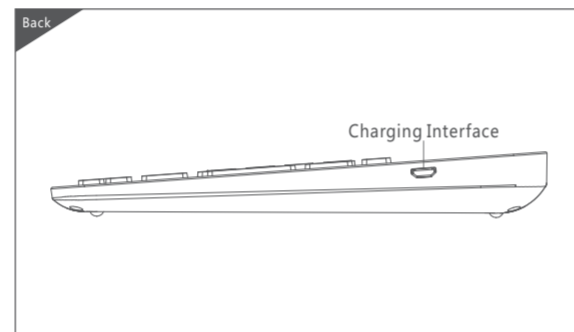
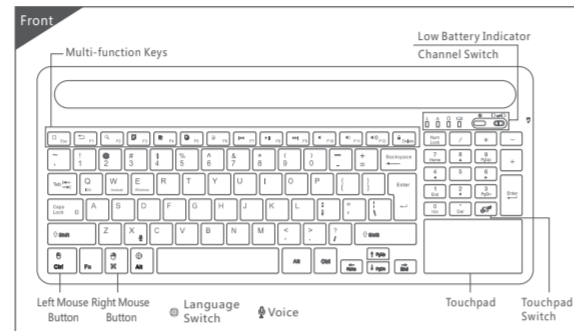
折线

折线



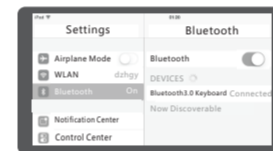
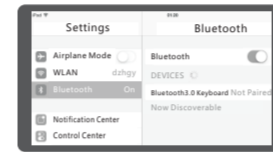
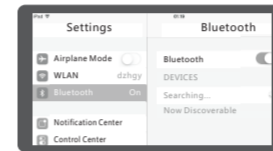
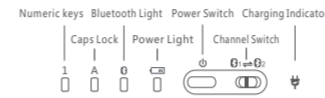
ZW-07

# Multi-channel Universal Desktop Slot Keyboard User Manual



Notice: Please read the user manual carefully before using this product.

## • iOS Connection Instructions:



1. Please switch on the power button on the upper right of the keyboard, and then press it for 1s to activate (4s to turn off the power).

2. Press **[Fn] + [Caps Lock]** for code pairing. The Bluetooth light will keep flashing blue, which means the device goes into the pairing mode.

3. Turn on the Bluetooth of your IOS devices and start the pairing.

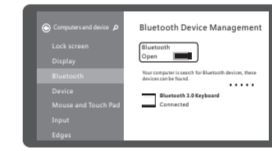
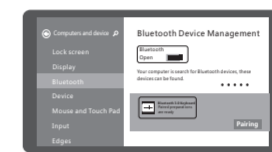
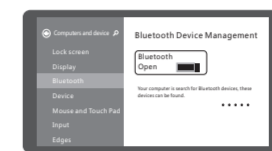
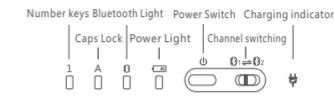
4. Searching will be initiated after Bluetooth turned on. Click on "Bluetooth 3.0 Keyboard" to finish the pairing process.

5. According the indication from your IOS device, please follow the instructions and press the corresponding password in the keyboard and then click "Enter".

6. You may use the keyboard freely after successfully connected with your IOS device.

Multi-channel Switch: Switch between **[Fn] + [1]** to **[Fn] + [2]** to any paired one freely while being connected with two devices simultaneously.

## • Win8 Connection Instructions:



1. Please switch on the power button on the upper right of the keyboard, and then press it for 1s to activate (4s to turn off the power).

2. Press **[Fn] + [Caps Lock]** for code pairing. The Bluetooth light will keep flashing blue, which means the device goes into the pairing mode.

3. Turn on the Bluetooth of your computer and start the pairing.

4. Searching will be initiated after Bluetooth turned on. Click on "Bluetooth 3.0 Keyboard" to finish the pairing process.

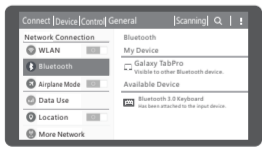
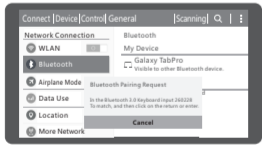
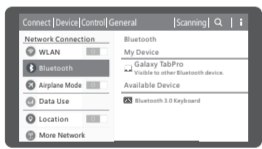
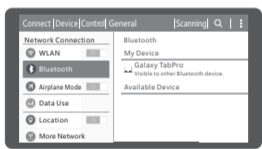
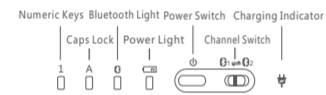
5. According the indication from your PC, please follow the instructions and press the corresponding password in the keyboard and then click "Enter".

6. You may use the keyboard freely after successfully connected with your PC.

Multi-channel Switch: Switch between **[Fn] + [1]** to **[Fn] + [2]** to any paired one freely while being connected with two devices simultaneously.

折线

## • Android Connection Instructions:



1. Please switch on the power button on the upper right of the keyboard, and then press it for 1s to activate (4s to turn off the power).

2. Press **[Fn] + [Caps Lock]** for code pairing. The Bluetooth light will keep flashing blue, which means the device goes into the pairing mode.

3. Turn on the Bluetooth of your device and start the pairing.

4. Searching will be initiated after Bluetooth turned on. Click on "Bluetooth 3.0 Keyboard" to finish the pairing process.

5. According the indication from your device, please follow the instructions and press the corresponding password in the keyboard and then click "Enter".

6. You may use the keyboard freely after successfully connected with your device.

Multi-channel Switch: Switch between **[Fn] + [1]** to **[Fn] + [2]** to any paired one freely while being connected with two devices simultaneously.

Remarks: After connecting successfully for once, no more code pairing needed next time. Just turn on the power switch in the Bluetooth keyboard and enable the tablet PC "Bluetooth."

## Technical Specifications

- Keyboard Size : 370\*164.5\*22.3 mm
- Touchpad Size : 71.7\*38.9 mm
- Working Distance : 10M
- Weight : 600g
- Keyboard Layout : 96 Keys
- Sleep Time : 10 Minutes
- Wake up the device : Press any key
- Battery Capacity : 370mAh
- Charging Current : <250mA
- Charging Time : 2h
- Working Voltage : 3.7V
- Low Voltage Alarm : <3.3V
- Standby Current : 0.85mA
- Sleep Current : 0.1mA
- Working current of Touchpad : 6.8-10.36mA
- Working current of Keys : 2.0mA

## Status Display LED

- Turn on the power switch, the blue light will be on.
- The blue light will flash intensely during code pairing.
- The blue light will be off after pairing successfully.
- Low voltage indication: the red light will flash when the voltage is below 3.3V.

## Troubleshooting

Please contact the after-sales service.

## IP Information

It is forbidden to duplicate any information from this user guide without the permission of the seller.

## Safety instructions

Do not open or repair this device. Do not use this device in a damp environment. Clean the device with dry cloth.

## Warranty

One-year limited hardware repair service from the date of purchase.

## Keyboard Maintenance

1. Please keep the keyboard away from liquid or humid environment. Don't close to the saunas, swimming pool, steam room, etc.
2. Please don't expose the keyboard to environment with extremely high or low temperature.
3. Please don't place the keyboard under sun for a long time.
4. Keep the keyboard away from open flame, such as cooking stoves, candles or fireplace.
5. Avoid sharp objects scratching the products; Recharge or replace the dry cell timely to ensure the normal use.

## FAQ

### 1. The tablet PC can't connect with the BT keyboard.

- 1) Please check first if the BT keyboard enters into code pairing status, then turn on the Bluetooth of the tablet PC to search for the device.
- 2) Check the power of the BT keyboard before using it and please fully charge the keyboard once the power is low.

### 2. The keyboard indication light keep flashing during use.

It means the battery power will be off soon, please charge the keyboard immediately.

### 3. The table PC displays BT keyboard is disconnected.

The BT keyboard will enter into sleeping mode to save power without use for 10 mins; Press any key to wake up the BT keyboard.

## Three System Function Key Combinations(fn+)

	Fn+ iOS Apple IOS System	Fn + Android Switch to Android System	Fn+ Win Switch to Win System
Esc	Return to desktop	Return to desktop	Home Page
F1	Esc	Return to the previous page	Return
F2	Search	Search	Search
F3	Select All	Select All	Select All
F4	Cut	Cut	Cut
F5	Copy	Copy	Copy
F6	Paste	Paste	Paste
F7	Previous	Previous	Previous
F8	Play/Pause	Play/Pause	Play/Pause
F9	Next	Next	Next
F10	Mute	Mute	Mute
F11	Volume-	Volume-	Volume-
F12	Volume+	Volume+	Volume+
Delete	Screen Lock	Screen Lock	Screen Lock

## Touchpad Functions

- Left Mouse Button:** Single finger click; Drag: Single finger click for twice and pressing to move
- Right Mouse Button:** Two fingers click
- Middle Mouse button:** Three fingers click
- Zoom:** Two fingers Stretching
- Vertical Scrolling:** Two fingers sliding vertically
- Open an application:** One finger sliding from up to down.
- Switch to the next application:** One finger sliding from left to right
- Bring out Win8 Charm menu:** One finger sliding from right to left
- Back/Forward:** Two fingers sliding horizontally

折线

## Warranty Card

User information

Company or personal full name

Contact address

Tel. \_\_\_\_\_ Zip \_\_\_\_\_

Purchased product's name and model NO.

Purchase date

Problems or damage relating to below reasons are not included in this limited warranty.  
(1) Accident, misuse, improper operation or any unauthorized repair, conversion or disassembly.  
(2) Improper operation or maintenance; violation against the instructions or connection with unsuitable power supply.



折线

折线

折线

# 尺寸：85x130mm 折页